

External Fixation System

Product Catalog

Dynamic Multiaxial Fixators

DYNAMIC MULTIAXIAL FIX. WITH CLAMP



TYPE	CODE	LENGTH	LENGTHENING	WEIGHT
		(mm)	(mm)	
SHORT	40140030101	230	25	573
STANDARD	40140020101	250	45	620
LONG	40140010101	275	70	680

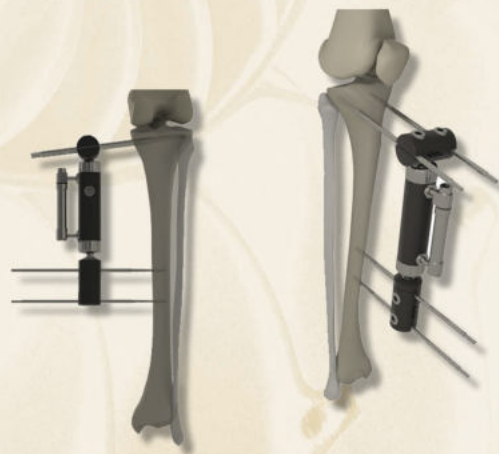


DYNAMIC MULTIAXIAL FIX. WITH T CLAMP



FEMUR T CLAMP 40140000400

TYPE	CODE	LENGTH	LENGTHENING	WEIGHT
		(mm)	(mm)	
SHORT	40140030141	193	27	555
STANDARD	40140020141	215	45	602
LONG	40140010141	240	70	662



Biotech GmbH
Hauptstraße 113.
56598 Rheinbrohl Germany
Tel : +49 2635 92221-0
Email : office-de@biotech-medical.net
www.biotech-medical.com



BIOTECH

REF:
VB-001-PROSP-PC

Revision
2

Publication date :
01.04.2022.

CE1011

"Movement is Life"

Dynamic Multiaxial Fixators

DYNAMIC MULTIAXIAL FIX. WITH 135° CLAMP

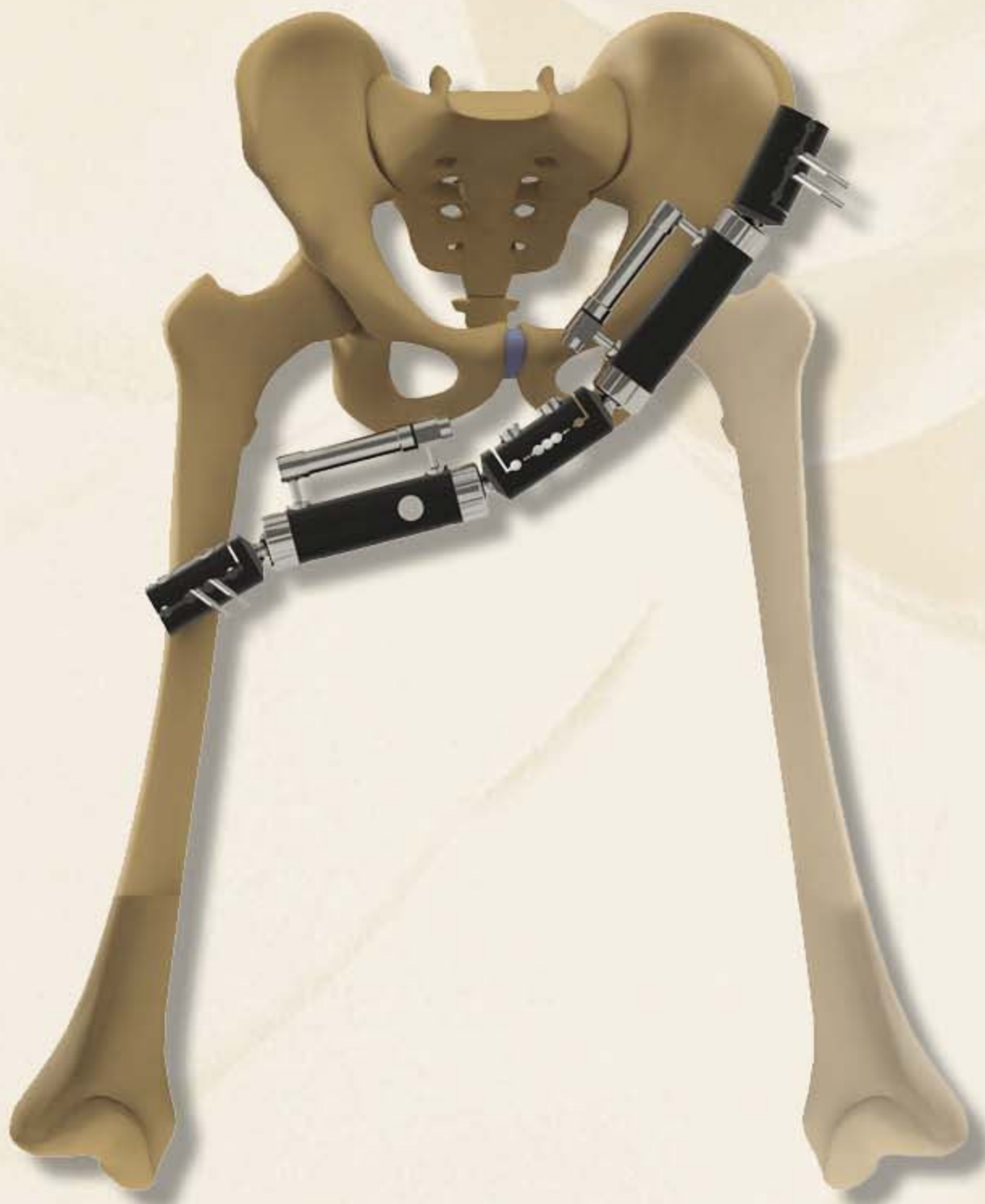


TYPE	CODE	LENGTH (mm)	LENGTHENING (mm)	WEIGHT (gr)
SHORT	40140030151	225	25	551
STANDARD	40140020151	247	43	598
LONG	40140010151	270	70	658



135° FEMUR CLAMP 40140000300

DOUBLE CLAMP



TYPE	CODE
DOUBLE CLAMP	40140000100

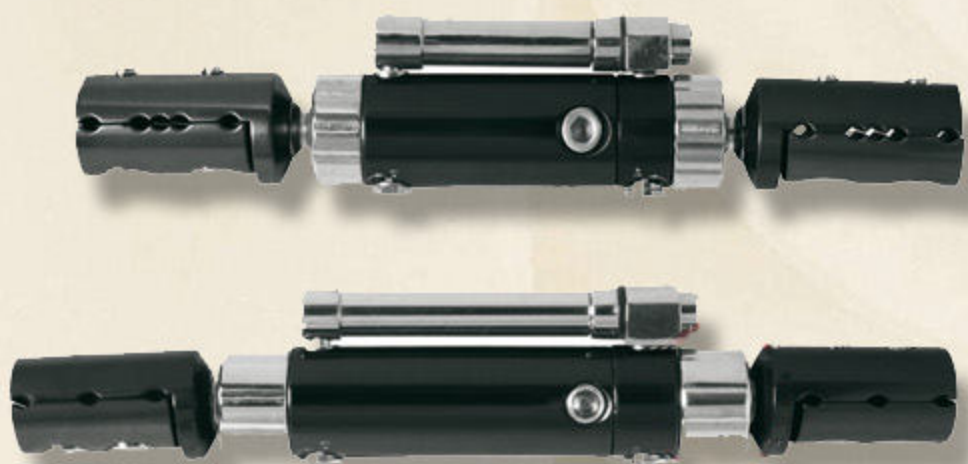
Double Clamp can be used for connection between two different fixators

Dynamic Multiaxial Fixators (Humerus)

DYN. MULTIAXIAL HUMERUS WITH 135° CLAMP FIXATORS

DYN. MULTIAXIAL HUMERUS FIXATORS

TYPE	CODE	LENGTH	LENGTHENING	WEIGHT
		(mm)	(mm)	
STANDARD	40840010101	175	25	309
LONG	40840020101	200	17	351

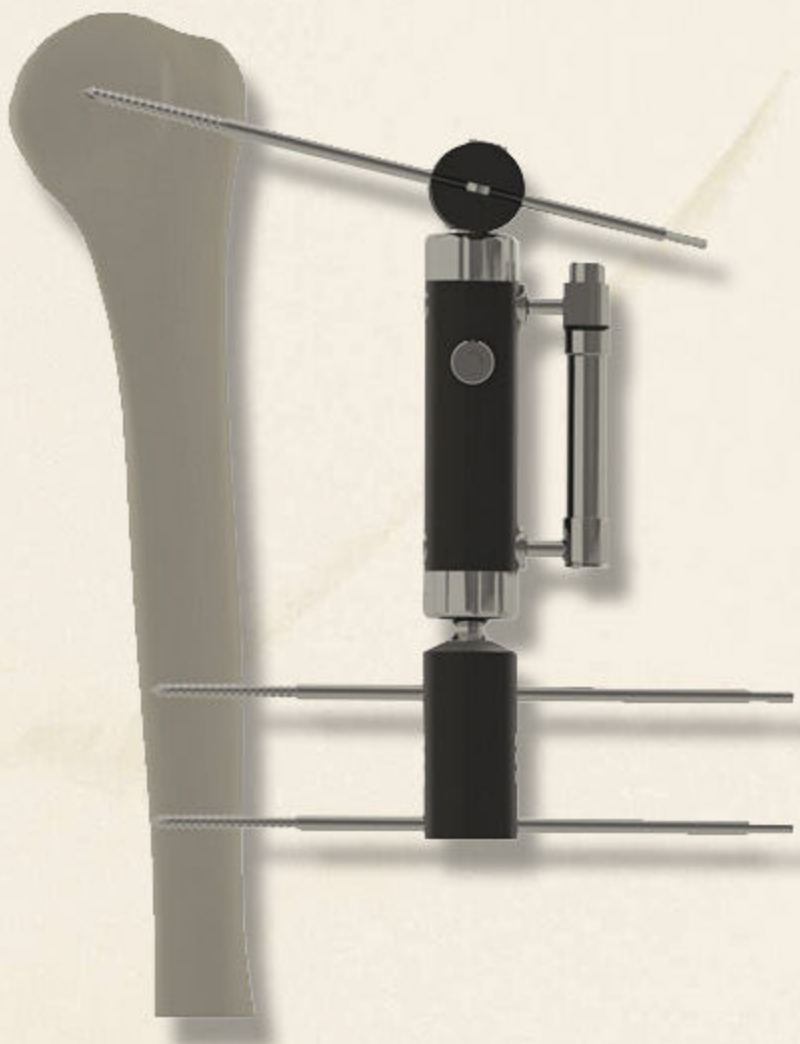


HUMERUS 135° CLAMP 40840000300



DYN. MULTIAXIAL HUMERUS WITH T CLAMP FIXATORS

TYPE	CODE	LENGTH	LENGTHENING	WEIGHT
		(mm)	(mm)	
STANDARD	40840010141	155	25	307
LONG	40840020141	180	47	349



HUMERUS T CLAMP 40840000200

SEGMENTAL MULTIAXIAL BONE TRANSVERS FIXATOR



TYPE	CODE	LENGTH	WEIGHT
		(mm)	(gr)
STANDARD	40340020011	335	830
LONG	40340030011	385	848

LIMB LENGTHENER FIXATOR (FOR FEMUR & TIBIA)



TYPE	CODE	LENGTH	LENGTHENING	WEIGHT
		(mm)	(mm)	(gr)
SHORT	40240030000	175	25	387
STANDARD	40240020000	215	70	493
LONG	40240010000	255	110	598

SEGMENTAL DYNAMIC FIXATOR



TYPE	CODE	LENGTH	WEIGHT
		(mm)	(gr)
SHORT	40340030001	200	462
STANDARD	40340020001	250	647
LONG	40340010001	300	680
EXTRA LONG	40340010002	400	825

LRS FIXATOR FOR CORRECTION OF DEFORMITY

LRS FIXATOR FOR CORRECTION OF DEFORMITY

TYPE	CODE	LENGTH (mm)	WEIGHT (gr)
STANDARD	41440020000	250	819
LONG	41440010000	300	852



PILON FIXATORS

ARTICULATING PILON MULTIAXIAL FIXATOR

TYPE	CODE	LENGTH (mm)	LENGTHENING (mm)	WEIGHT (gr)
SHORT	40340020012	300	55	700
LONG	40340020013	315	55	707



PILON FIXATOR STANDART

TYPE	CODE	LENGTH (mm)	LENGTHENING (mm)	WEIGHT (gr)
STANDARD	40340010200	215	45	566



Fixators

PELVIC EXTERNAL FIXATOR WITH T CLAMP



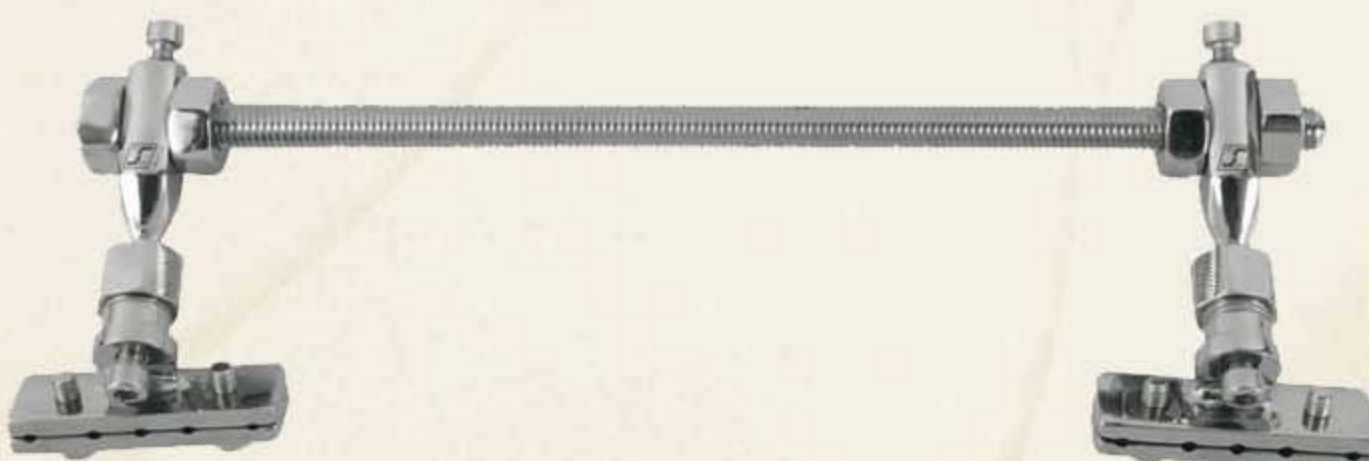
TYPE	CODE	LENGTH (mm)	LENGTHENING (mm)	WEIGHT (gr)
SHORT	41240030200	250	45	782
STANDARD	41240020200	290	90	878
LONG	41240010200	345	135	1001

SPECIAL LIMB FIXATOR T CLAMP SEGMENTAL



TYPE	CODE	LENGTH (mm)	LENGTHENING (mm)	WEIGHT (gr)
SHORT	40440020100	200	60	639
LONG	40440010100	300	60	846

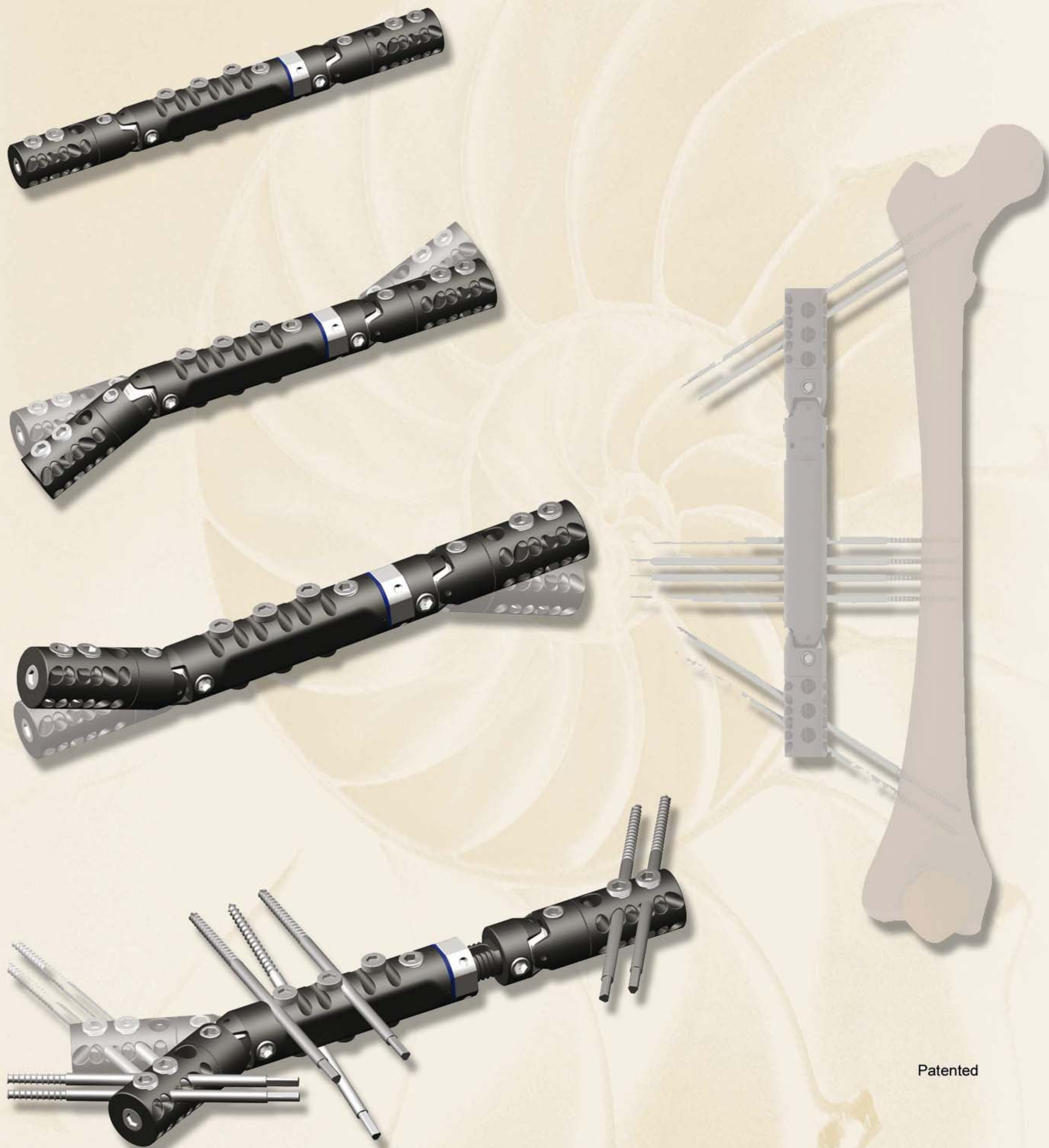
ACP ROD & CLAMP PELVIC FIXATOR



TYPE	CODE	LENGTH (mm)	WEIGHT (gr)
SHORT	40950030100	300	738
STANDARD	40950020100	350	771
LONG	40950010100	400	805

M A M E F Fixator

MODULAR ADJUSTABLE MULTIFUNCTIONAL EXTERNAL FIXATOR



Patented

TYPE	CODE	LENGTH (mm)	LENGTHENING (mm)	WEIGHT (gr)
SHORT	41520030000	245	25	585
STANDARD	41520020000	265	45	635
LONG	41520010000	290	66	685

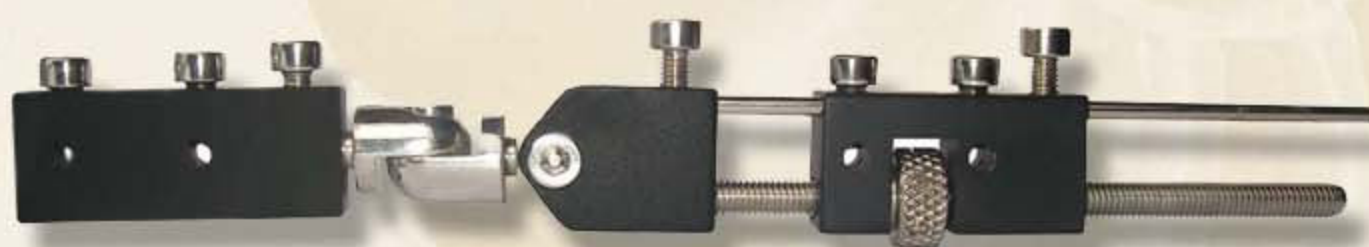
Wrist Fixators

DYNAMIC ANGLED CLAMP WRIST FIXATOR



TYPE	CODE	LENGTH (mm)	WEIGHT (gr)
STANDARD	40640020102	195	120
LONG	40640010101	230	125

COLLES FIXATOR



TYPE	CODE	LENGTH (mm)	LENGTHENING (mm)	WEIGHT (gr)
STANDARD	40740010100	150	60	160

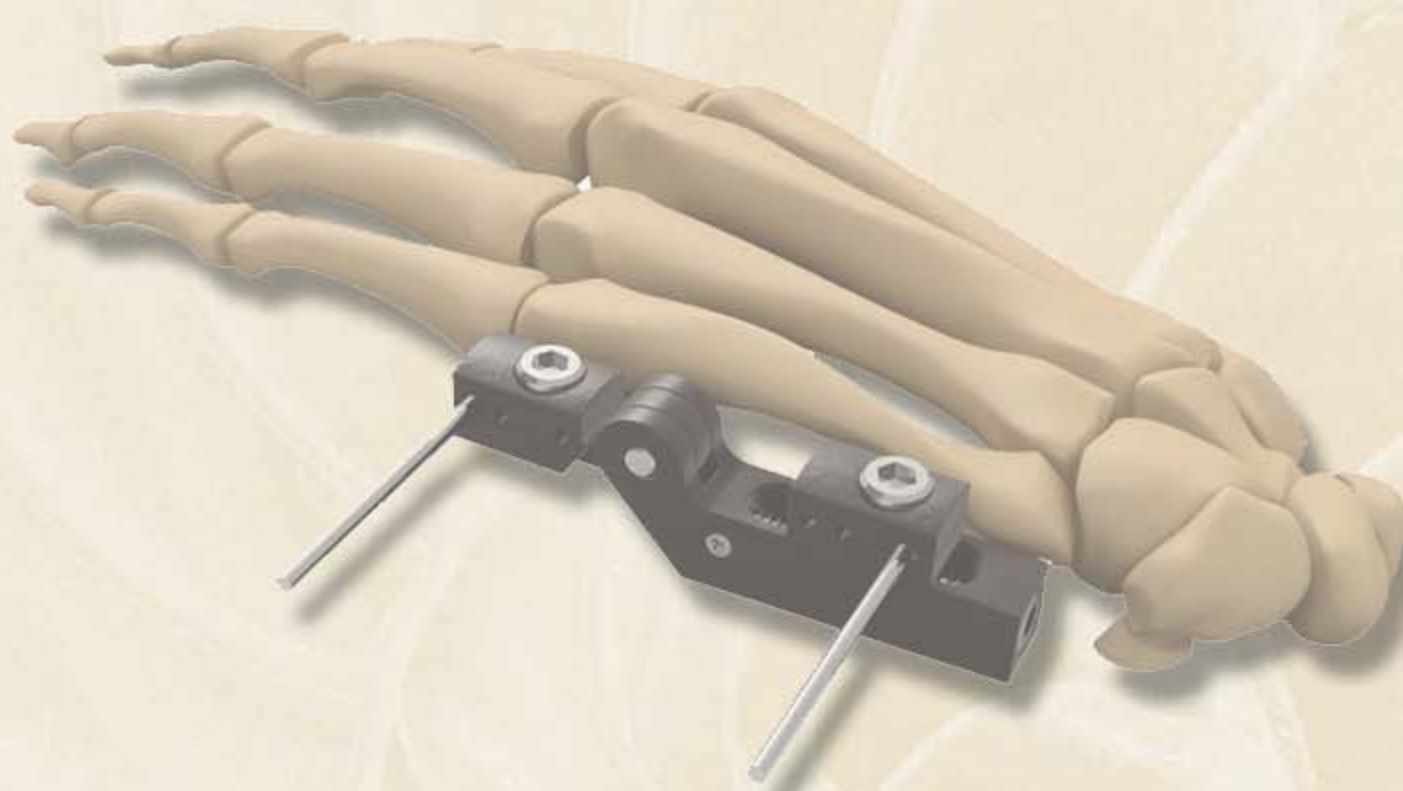
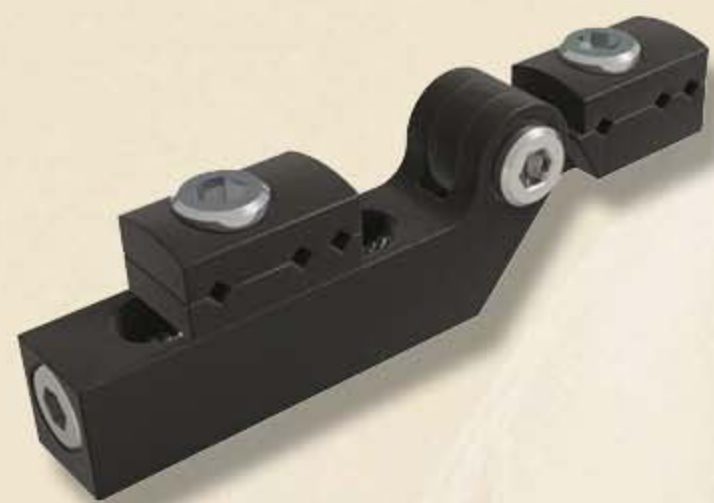
MULTIAXIAL DISTAL RADIUS WRIST FIXATOR



TYPE	CODE	LENGTH (mm)	LENGTHENING (mm)	WEIGHT (gr)
STANDARD	40640020013	180	40	181

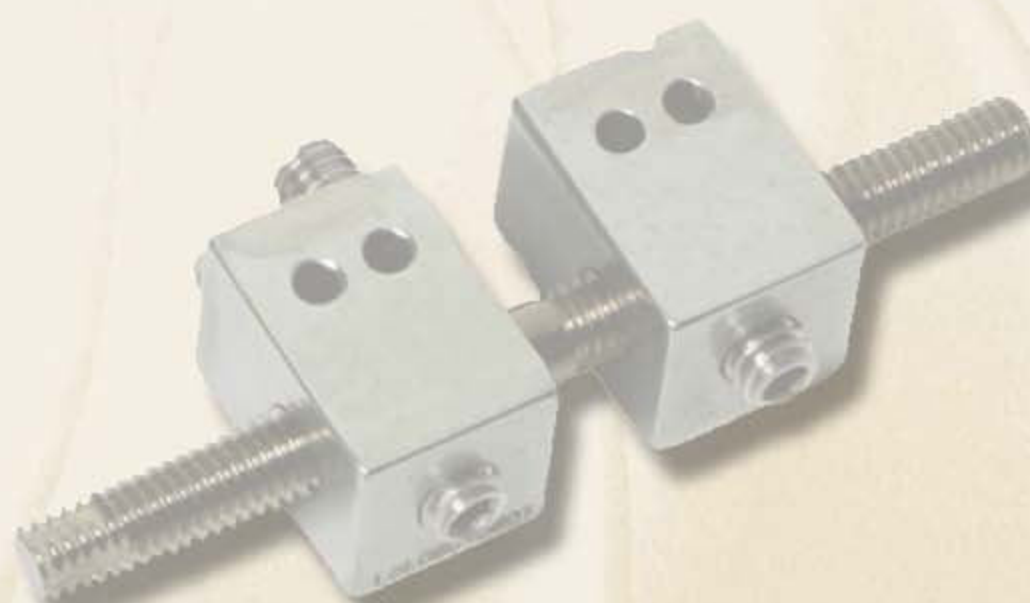
FINGER AND MANDIBULA FIXATORS

FINGER AND MANDIBULA FIXATOR JOINT



TYPE	CODE	LENGTH	WEIGHT
		(mm)	(gr)
STANDARD	41141020100	60	34

FINGER AND MANDIBULA FIXATOR



TYPE	CODE	LENGTH	LENGTHENING	WEIGHT
		(mm)	(mm)	(gr)
SHORT	41140030100	50	20	11
STANDARD	41140020100	60	30	12
LONG	41140010100	70	40	13

SCHANZ SCREWS

SCHANZ SCREWS CORTICAL

Type (mm)	Code (S.Steel)	Code (Ti)	Code (Ti-HA Coated)
2 x 15 x 60	20910601502	20920061502	20929061502
2 x 20 x 60	20910602002	20920062002	20929062002
3 x 15 x 60	20910601503	-	-
3 x 15 x 80	20910801503	20920081503	-
3 x 15 x 100	20910101503	20920101503	20929101503
3 x 15 x 120	20910121503	-	-
3 x 20 x 60	20910602003	20920062003	20929062003
3 x 20 x 80	20910802003	20920082003	20929082003
3 x 20 x 100	20910002003	-	-
3 x 20 x 120	20910202003	-	-
3 x 25 x 100	20910002503	20920102503	20929102503
3 x 25 x 120	20910202503	-	-
4 x 20 x 70	20920072004	20929102004	-
4 x 20 x 80	20910802004	20920082004	20929082004
4 x 20 x 100	20910002004	20920102004	-
4 x 20 x 120	20910202004	-	-
4 x 20 x 140	20910402004	-	-
4 x 20 x 150	20910502004	-	-
4 x 25 x 100	20910102504	20920102504	20929102504
4 x 25 x 120	20910202504	20920122504	20929122504
4 x 25 x 140	20910142504	-	-
4 x 25 x 150	20910502504	20929152504	-
4 x 30 x 100	20910103004	-	-
4 x 30 x 120	20910203004	-	-
4 x 30 x 140	20910143004	-	-
4 x 30 x 150	20910153004	-	-
4 x 30 x 180	20910183004	-	-
4 x 35 x 80	20920083504	-	-
5 x 30 x 120	20920123005	20929153005	-
5 x 30 x 150	20910153005	20920153005	-
5 x 40 x 120	20910124005	20920124005	20929124005
5 x 40 x 150	20910504005	20920154005	20929154005
5 x 40 x 160	20910604005	20920164005	20929164005
5 x 40 x 180	20910184005	20920184005	20929184005
5 x 40 x 200	20910204005	20929204005	-
5 x 40 x 240	20910244005	-	-
6 x 20 x 140	20920142006	-	-
6 x 30 x 150	20910153006	20929153006	-
6 x 30 x 80	20910183006	20929183006	-
6 x 30 x 200	20910230006	-	-
6 x 40 x 120	20910124006	20920124006	20929124006
6 x 40 x 140	20910144006	20920144006	20929144006
6 x 40 x 150	20910154006	20920154006	-
6 x 40 x 160	20910164006	20920164006	20929164006
6 x 40 x 180	20910184006	20920184006	20929184006
6 x 40 x 200	20910204006	20920204006	20929204006
6 x 40 x 220	20910224006	20920224006	20929224006
6 x 40 x 250	20910254006	21020254006	-
6 x 50 x 200	20910205006	20929205006	-
6 x 50 x 240	20910245006	-	-



SCHANZ SCREWS

SCHANZ SCREWS CANCELLOUS

Type (mm)	Code (S.Steel)	Code (Ti)	Code (Ti-HA Coated)
5 x 30 x 120	21010203005	21020123005	21029123005
5 x 30 x 140	21010403005	21020143005	21029143005
5 x 30 x 150	21010153005	-	-
5 x 40 x 150	21010154005	21020154005	21029154005
5 x 40 x 160	21010604005	21020164005	-
5 x 40 x 180	21010804005	21020184005	21029184005
5 x 40 x 200	21012004005	21020204005	21029204005
5 x 40 x 220	21010224005	-	-
5 x 50 x 150	21010155005	-	-
5 x 50 x 180	21010185005	-	-
5 x 50 x 200	21010205005	-	-
5 x 50 x 220	21010225005	-	-
5 x 60 x 250	21012506005	-	-
6 x 30 x 110	21010103006	-	-
6 x 30 x 120	21010203006	21020123006	21029123006
6 x 30 x 140	21010403006	21020143006	21029143006
6 x 30 x 150	21010503006	-	-
6 x 30 x 160	21010603006	-	-
6 x 40 x 130	21010304006	-	-
6 x 40 x 150	21010504006	210 20154006	21029154006
6 x 40 x 160	21010604006	-	-
6 x 40 x 180	21010804006	21020184006	21029184006
6 x 40 x 200	21012004006	21020204006	21029204006
6 x 40 x 220	21012204006	21020224006	21029224006
6 x 40 x 240	21012404006	-	-
6 x 40 x 250	21012504006	-	-
6 x 50 x 110	21010105006	-	-
6 x 50 x 180	21011805006	-	-
6 x 50 x 200	21012005006	21029205006	-
6 x 50 x 220	21012205006	21029225006	-
6 x 50 x 240	21012405006	-	-
6 x 50 x 250	21012505006	-	-
6 x 50 x 260	21012605006	-	-
6 x 60 x 120	21010206006	-	-



instruments



Fixator Manipulation Forceps 0400000001



Template Fixator 04064000010 & 04111000001



T-Handle

2mm	08021000011
3mm	08021000012
4mm	08021000013
5-6mm	08021000015

Trocar 04015000010



Drill & Stoper

2.5mm	02005125000
2.7mm	02005127000
3mm	02005130000
3.2mm	02005132000
4.5mm	02005145000



Drill Guides

Short	04025000010
Standart	04025000020
Long	04025000030



BIOTECH

"Movement is Life"

Biotech GmbH
Hauptstraße 113.
56598 Rheinbrohl Germany
Tel : +49 2635 92221-0
Email : office-de@biotech-medical.net
www.biotech-medical.com

REF:
VB-001-PROSP-PC

Revision
2

Publication date :
01.04.2022.

CE 1011